



Accelerate Product Releases with Real-Time Visibility



VALIDATED, REAL-TIME VISIBILITY

Shipment location & conditions



HYPER-ACCURATE LOCATION

to meters via Cellular, GPS & WiFi



BEST GLOBAL COVERAGE

186 countries; high reliability



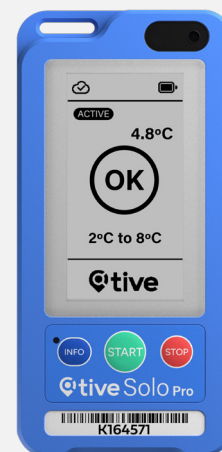
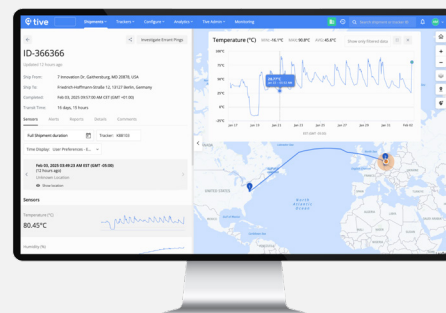
ALL TEMPERATURE PROFILES

Including dry ice & cryogenic

Solo Pro Trackers

Tive Solo™ Pro trackers provide validated, real-time visibility for pharmaceutical and biologics shipments—to reduce excursions, meet compliance requirements, and protect product integrity from point of origin to point of delivery.

- › **Largest display on the market:** High-contrast screen display (2.66" diagonal) works within a wide range of temperatures
- › **Supports all temperature profiles:** Including cool, refrigerated & frozen, as well as dry ice & cryogenic using external probes
- › **Hyper-accurate location:** Solo Pro trackers provide location data to within meters via GPS, cellular triangulation & WiFi geolocation
- › **Customizable alerts:** Get immediate alerts on location, light, humidity, shock & tilt—with advanced temp alerts (single excursion, cumulative & MKT)
- › **Flexible configuration profiles:** Modify tracker settings while in transit, as needed; adjust measurement & transmission intervals, or turn on/off GPS to balance battery life & data coverage
- › **Turn insight into action:** Analyze historical shipment data to unlock insights about shipments, alerts & carriers—to make informed decisions that drive your business forward
- › **Flight-compliant:** Solo Pro trackers use a non-lithium battery & are approved for use on most air carriers
- › **Sustainable solution:** Trackers have a long-lasting battery & can be single use, reused, or recycled via the Tive Green Program
- › **Fully validated and GxP compliant:** Includes FDA 21 CFR Part 11 & EU Annex 11, as well as SOC 2 Type 2 & ISO/IEC 27001 security



Designed for these shipments



Cold Chain



Pharmaceuticals
& Biologics



Cell & Gene Therapy



Temperature-Controlled
Packaging



Commercial &
Clinical Trials



Technical Specifications

GLOBAL CELLULAR CONNECTIVITY

Transmission Type:

LTE Global Bands: B1/B2/B3/B4/B5/B7/B8/
B12/B13/B18/B19/B20/B25/B26/B28/B66/
(LTE-TDD) B34/B38/B40/B41

Communication Interval:

5 minutes to 24 hours, programmable,
immediate communication (excursion, shock)

LOCATION

Location Method:

Cellular Triangulation, GPS, & WiFi Geolocation

Location Accuracy:

Advanced GPS: 10 m (33 feet)
WiFi Geolocation: 50 m (<150 feet)
Cellular Triangulation: 500 m (0.3 miles)

DISPLAY INDICATOR

Large (2.66 in/68 mm), high-contrast display
shows alarms, start/stop & data upload status

OPERATING TEMPERATURE

-30°C to 60°C (-22°F to 140°F)
The display works between -20°C to 60°C

SENSORS

Condition Sensors:

Temperature, Light, Humidity, Shock, Tilt, Motion

Temperature Accuracy:

±0.5°C (±0.9°F)
Drift less than 0.01°C (0.02°F) per year
Certificate of Calibration (3-Point, ISO 17025)

Temperature Response:

Meets USP <1079.3> and EN12830

Measurement Interval:

5 minutes to 12 hours, programmable

Measurement Capacity:

Up to 25,000 records

BATTERY

Rechargeable NiMH (Non-Lithium) Battery
(3.6 V, 2200 mAh / 7.92 Wh capacity)
Designed to support temperature down to -30°C

Battery life:

30+ days (60-minute transmission interval)
110+ days (12-hour transmission interval)
Shelf life: 1 year

CASE SPECIFICATIONS

Case Material:

UL 94-V0 flame-retardant plastic

Dimensions:

118 x 56 x 21 mm (4.6 x 2.2 x 0.8 in)

Weight:

TT-9100: 170 g (6.0 oz)
TT-9110: 176 g (6.2 oz)

IP Rating:

IP65, water resistant

Mounting:

3M Adhesive, Cable Zip Tie

CERTIFICATIONS

Americas: FCC, IC, NOM, Anatel, MTC*
EMEA: CE, UKCA, RoHS, WEEE, ICASA, ANRT*
APAC: MIC, RCM, CCC, SRRC, NCC*, KC*, ETA*,
PTA*, SIRIM*, NBTA*, IMDA*

Flight Compliant: RTCA DO-160G, No Lithium

* In progress



Available Solutions

	Solo Pro (TT-9100)	Solo Pro Dry Ice (TT-9110 w/Probe-110)	Solo Pro Cryogenic (TT-9110 w/Probe-210)
Temperature Range	-30°C to 60°C	-100°C to 50°C	-200°C to -50°C
Accuracy	±0.5°C Drift less than 0.01°C per year	±0.5°C Drift less than 0.1°C after 5 years	±1.4°C Drift less than 0.1°C after 5 years
Temperature Probe	Probeless	Overall probe length: 1 m Tip length: 75 mm Tip diameter: 4 mm	Overall probe length: 1 m Tip length: 150 mm Tip diameter: 4 mm



Committed to Sustainability

The Solo Pro can be recycled
with Tive's [Green Program](#).

Get a Complete Cold Chain Solution.

Learn more at www.tive.com/pharma.